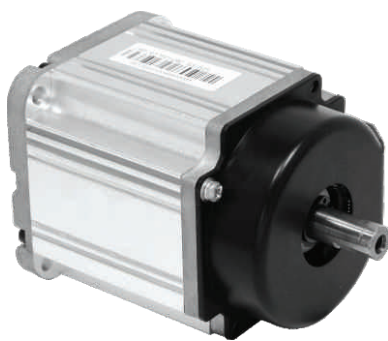


JACK

China No.1

POWER SAVING

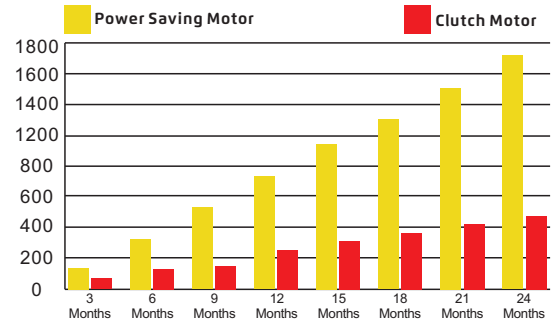
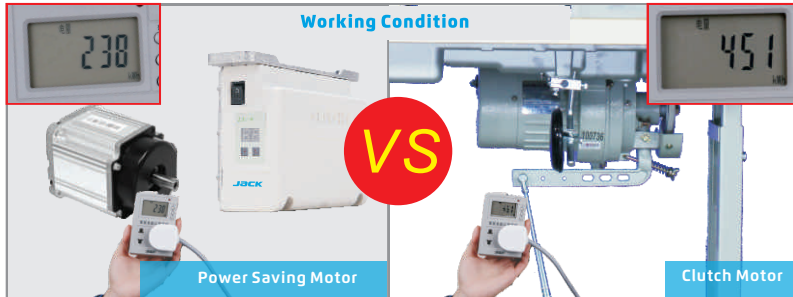


JK-513A

Power Saving Motor

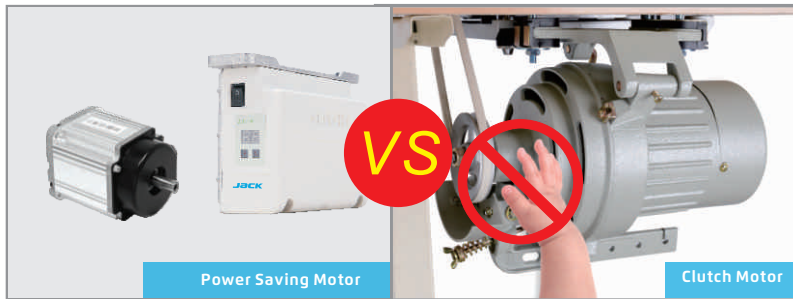
Advantages:

1 Power saving 71%



Each set can save \$70 per year and equal 2 clutch motors

2 Direct drive



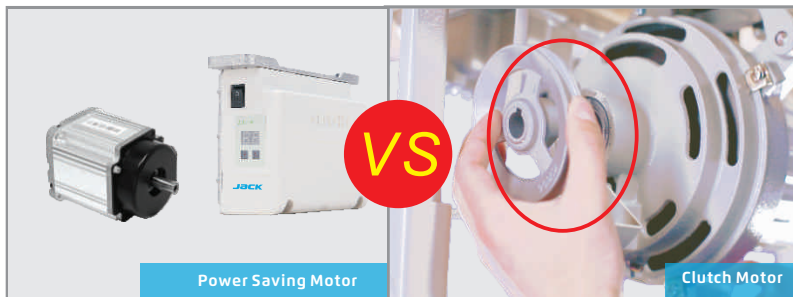
Direct drive, run safety.

3 High speed , adjustable



The speed could be adjusted very easily.

4 Quick and easy maintenance



Quick and easy maintenance with integrated motor and fewer parts.

5 Lower temperatures while the motor working guarantee longvity of the motor.

6 Lower motor vibration and noise make the operator a better working environment.

Model						Needle Position		NW/GW (kg)
	V	W	Nm	(S.p.m)			(mm)	
JK-513A	220V	550W	1-3.5	5000	✓		535x335x195	8.2/10.8
JK-513A-1	220V	550W	1-3.5	5000	✓	✓	535x335x195	8.2/10.8
JK-563A	220V	750W	1-3.5	3500	✓		535x335x195	8.2/10.8
JK-563A-1	220V	750W	1-3.5	3500	✓	✓	535x335x195	8.2/10.8